

The background of the image is a workshop wall. At the top, a wooden sign reads "ABOUT A DEMAND" in large, colorful letters. Below it, another wooden sign reads "LOVE" in large, red letters with black shadows. The wall is decorated with a rainbow flag, a colorful geometric pattern, and a wooden lattice with circular cutouts. A white text box is overlaid on the top part of the image.

1510-1540 PARKMOOR AVENUE, SAN JOSE
SAN JOSE, SANTA CLARA COUNTY - OFFICE OF SUPPORTIVE HOUSING

ACCESSIBILITY & INCLUSION WORKSHOP



County of Santa Clara
Office of Supportive Housing



Please Join Us for the Inclusive Design Session for The 1510-1540 Parkmoor (HUB) Development



August 29, 2022 at 5:30 pm

Join via Zoom. Free and open to the public

Please RSVP: <https://forms.gle/nzcCfZpVp6AFREY88>

Please provide your comments:

<https://docs.google.com/document/d/1UY4dIIINp1rj0SyARg00Gy4pxCEUPLrUAXfNwhY0LZxw/edit?usp=sharing>

Abode Services (along with our development entity Allied housing) is developing a new permanent supportive housing development over a community center for current and former foster youths (called the HUB) at 1510-1540 Parkmoor Avenue in San Jose.

We would like to hear your thoughts about the design of the project and how to make it as inclusive and accessible as possible. Please join us and offer your valuable insights! See you on Zoom!

Join Zoom Meeting

<https://zoom.us/j/3691748212>

Meeting ID: 369 174 8212

One tap mobile

+16699009128,,3691748212# US (San Jose)

+12532158782,,3691748212# US (Tacoma)

Please RSVP to Macy Leung, Senior Project Manager at mleung@abodeservices.org.



WELCOME!

Overview

- **Introduction and Welcome!**
- **Project Overview**
- **Site Context & Building Design**
- **Overall Building Floor Plans**
- **Unit Plans**



County of Santa Clara
Office of Supportive Housing



ABOUT ALLIED HOUSING

Allied Housing, Inc.

- Bay Area focused nonprofit developer primarily focused on creating supportive housing developments and 100% affordable housing development.
- Originally founded in Alameda County, Allied Housing ("Allied"), Abode Services's ("Abode") housing development affiliate, has been addressing the affordable housing and homeless needs in the San Francisco Bay Area for over 25 years.
- Projects throughout Alameda, Santa Clara, Santa Rosa and Napa Counties in various stages of development.

Abode Services

Started in 1989	Housing First	Serving + 10,500 Residents Each Year
<u>Overview</u> <ul style="list-style-type: none">› Programs and Services› Supportive Housing Development› Property Management› Housing Services and Landlords› Outreach	<u>Population Served</u> <ul style="list-style-type: none">› Families› Transitional Age Youth› Veterans› Chronically Homeless› Low-Income	<u>Our Communities</u> <ul style="list-style-type: none">› Alameda County› Santa Clara County› Napa County› San Mateo County› Santa Cruz County› San Francisco County



ACTIVE COMMUNITY ENGAGEMENT

“Listen First, then Let’s Get Things Done.”

- Listen
- Feedback
- Engage
- Dialogues
- Inclusion

Key Outreach Tools:

- ✓ Key Outreach
- ✓ Interactive Design Sessions, workshops
- ✓ One-on-one interviews and meetings
- ✓ Mailings, email fliers, tours, community meetings, presentation, online survey



PROJECT OVERVIEW



PROJECT PRELIMINARY OVERVIEW

AT A GLANCE ...

Parkmoor (Hub)

- 81 Residential Units: 13 mobility units & 9 HVI
- A New Hub on the Ground Floor
- New Construction
- Tax Credit Financed Project
- Sustainable, All Electric Building

1

Located at 1510-1540 Parkmoor Avenue in San Jose on a 1.62 Acre Site

2

Affordable Housing over the HUB
New Ground Floor Community Youth Center

3

Surface Parking + Car Stackers
Wood Frame w/ Podium



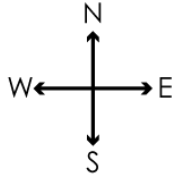
County of Santa Clara
Office of Supportive Housing



SITE CONTEXT & BUILDING DESIGN



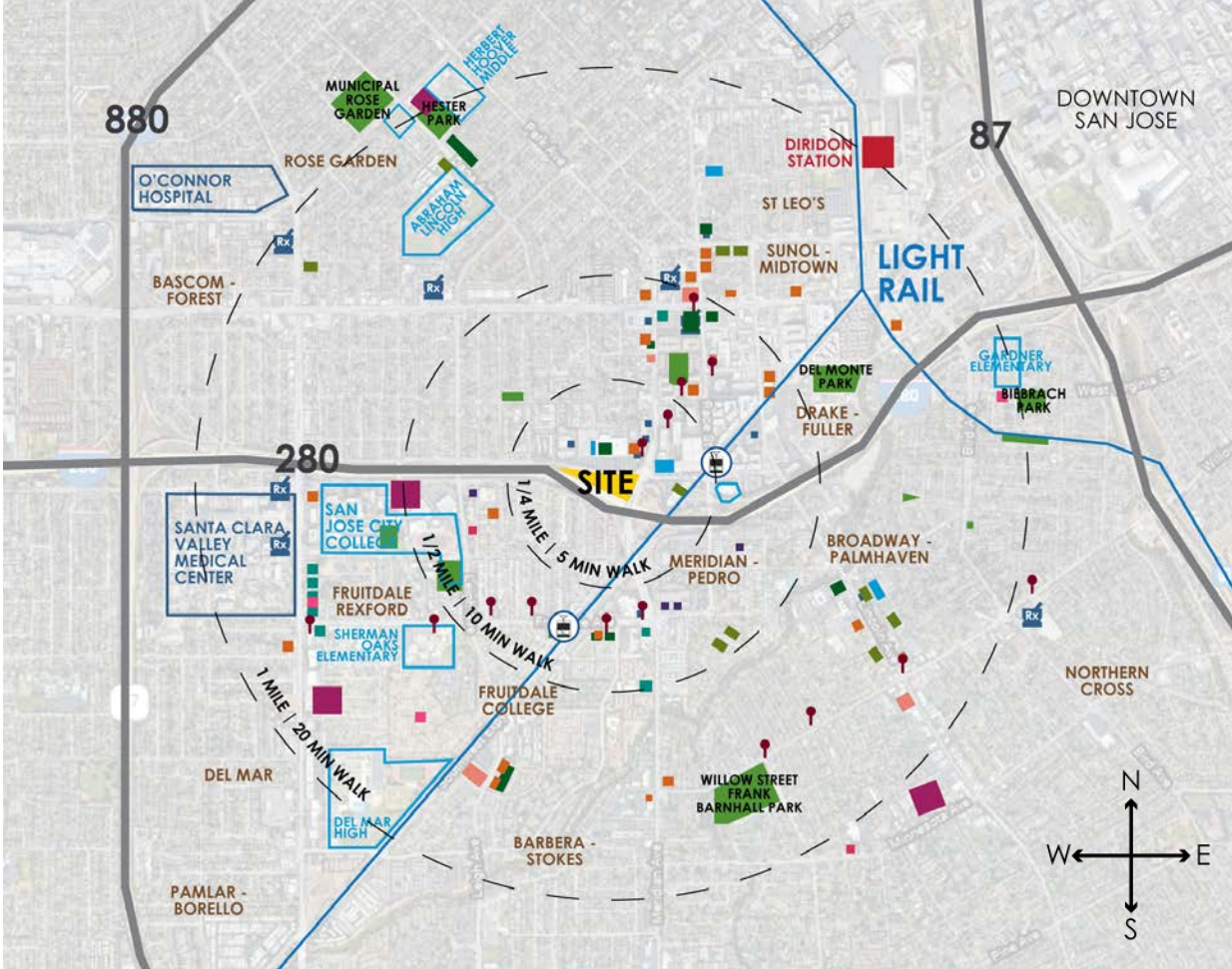
AERIAL VIEW



County of Santa Clara
Office of Supportive Housing



NEIGHBORHOOD OVERVIEW



LEGEND

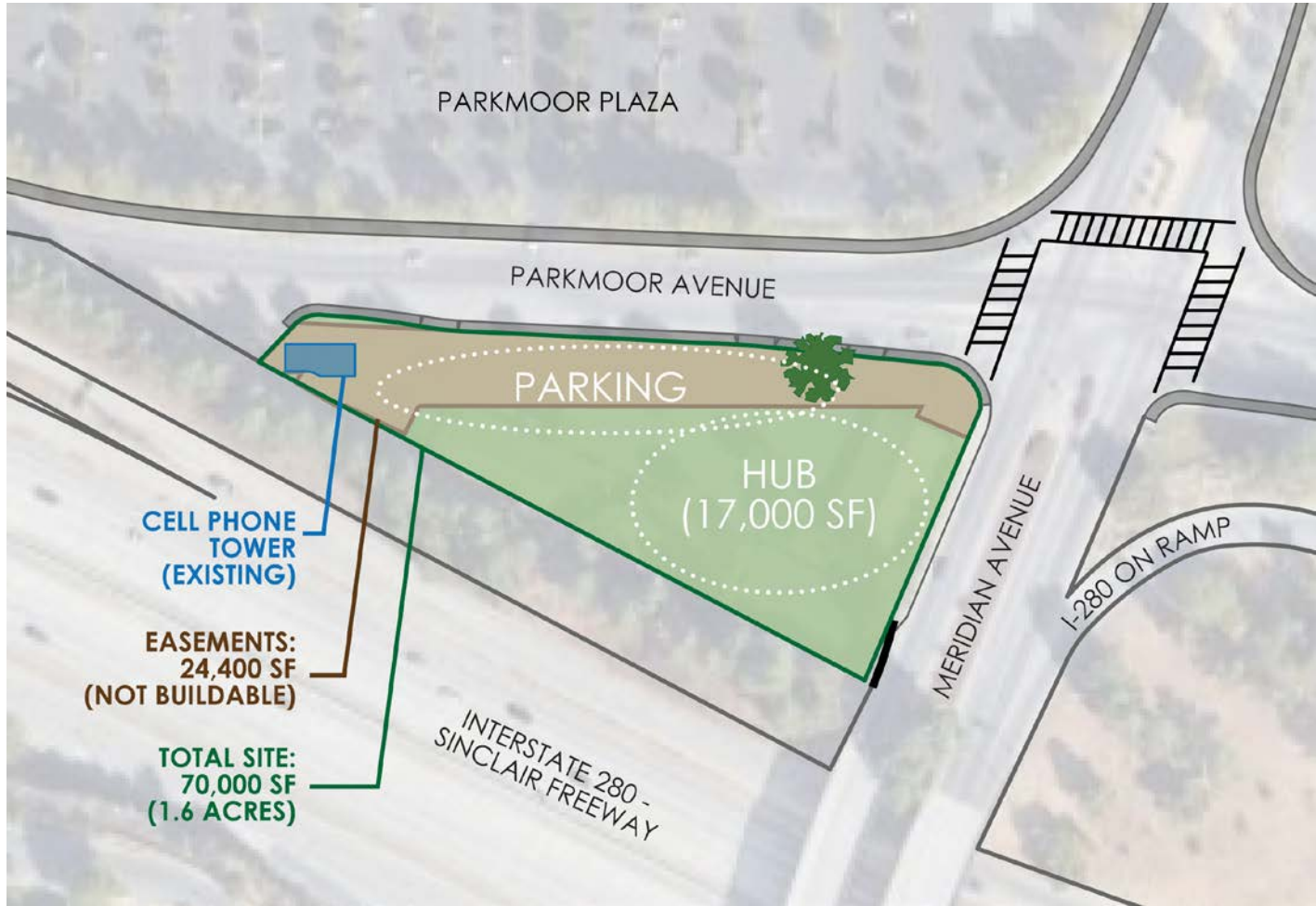
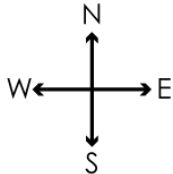
- HIGHWAYS
- BUS STOPS
- LIGHT RAIL STATIONS
- DIRIDON STATION
- HOUSING
- SCHOOLS
- DAYCARES
- LIBRARIES
- HEALTHCARE
- FIRE STATIONS
- PARKS
- COMMUNITY CENTERS
- CHURCHES
- GROCERY
- RETAIL
- RESTAURANTS
- FAST FOOD
- NEIGHBORHOODS



County of Santa Clara
Office of Supportive Housing



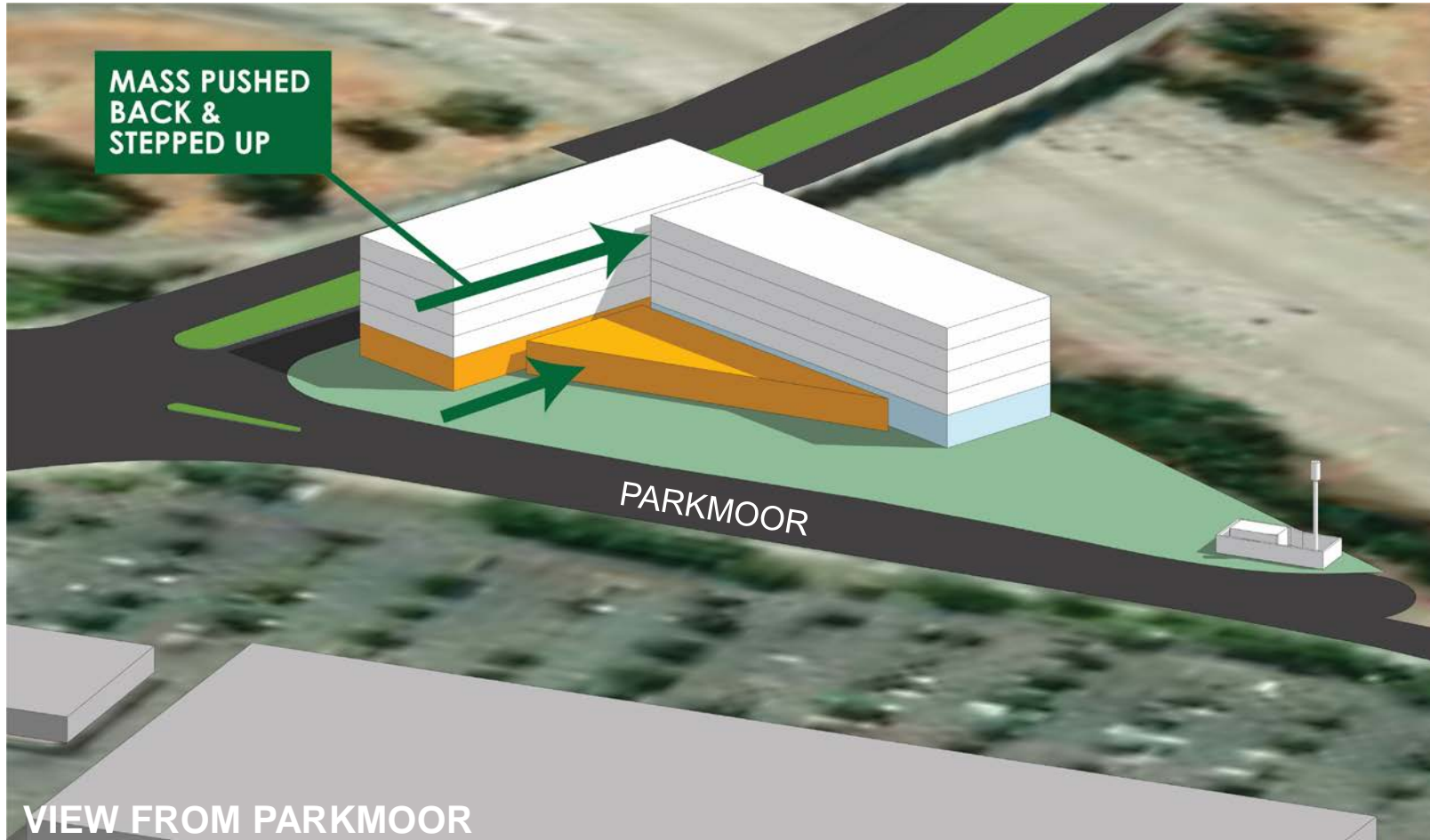
SITE PLAN DIAGRAM



County of Santa Clara
Office of Supportive Housing



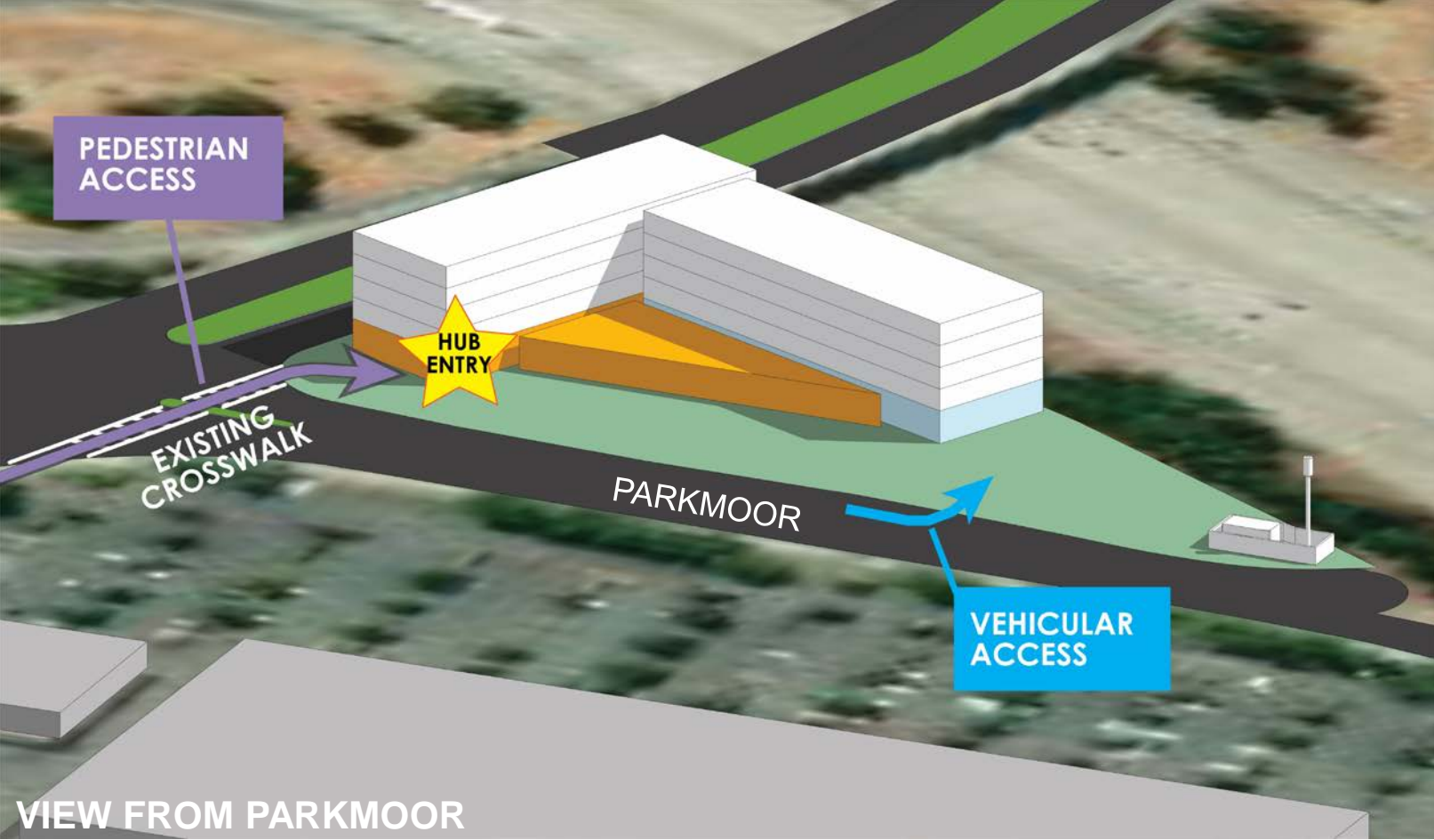
CREATING A WELCOMING BUILDING



County of Santa Clara
Office of Supportive Housing



INCORPORATING PEDESTRIAN SAFETY



VIEW FROM PARKMOOR



County of Santa Clara
Office of Supportive Housing



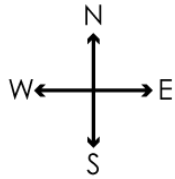
AERIAL VIEW



County of Santa Clara
Office of Supportive Housing



CITY PROPOSED PEDESTRIAN IMPROVEMENTS



County of Santa Clara
Office of Supportive Housing



DESIGN



County of Santa Clara
Office of Supportive Housing



DESIGN: HOUSING ENTRY



County of Santa Clara
Office of Supportive Housing



DESIGN: HOUSING ENTRY



County of Santa Clara
Office of Supportive Housing



FLOOR PLANS



RESPONSE TO ALLIED MEETING W/ SVILC.05.24.22

Comment	Response
Slopes should not be too steep	Incorporated into site design
Should have automatic doors	Added at main entry door, community room, laundry room, and trash vestibule
Washers/Dryers should be accessible	One accessible washer and one accessible dryer have been accounted for in the laundry room design
Lower sinks	Provided in mobility units
Lower microwave	No microwaves in units, will be incorporated into community room kitchen design
Closets should have lower shelves	Provided in mobility units
Level door and drawer handles (no knobs)	Provided

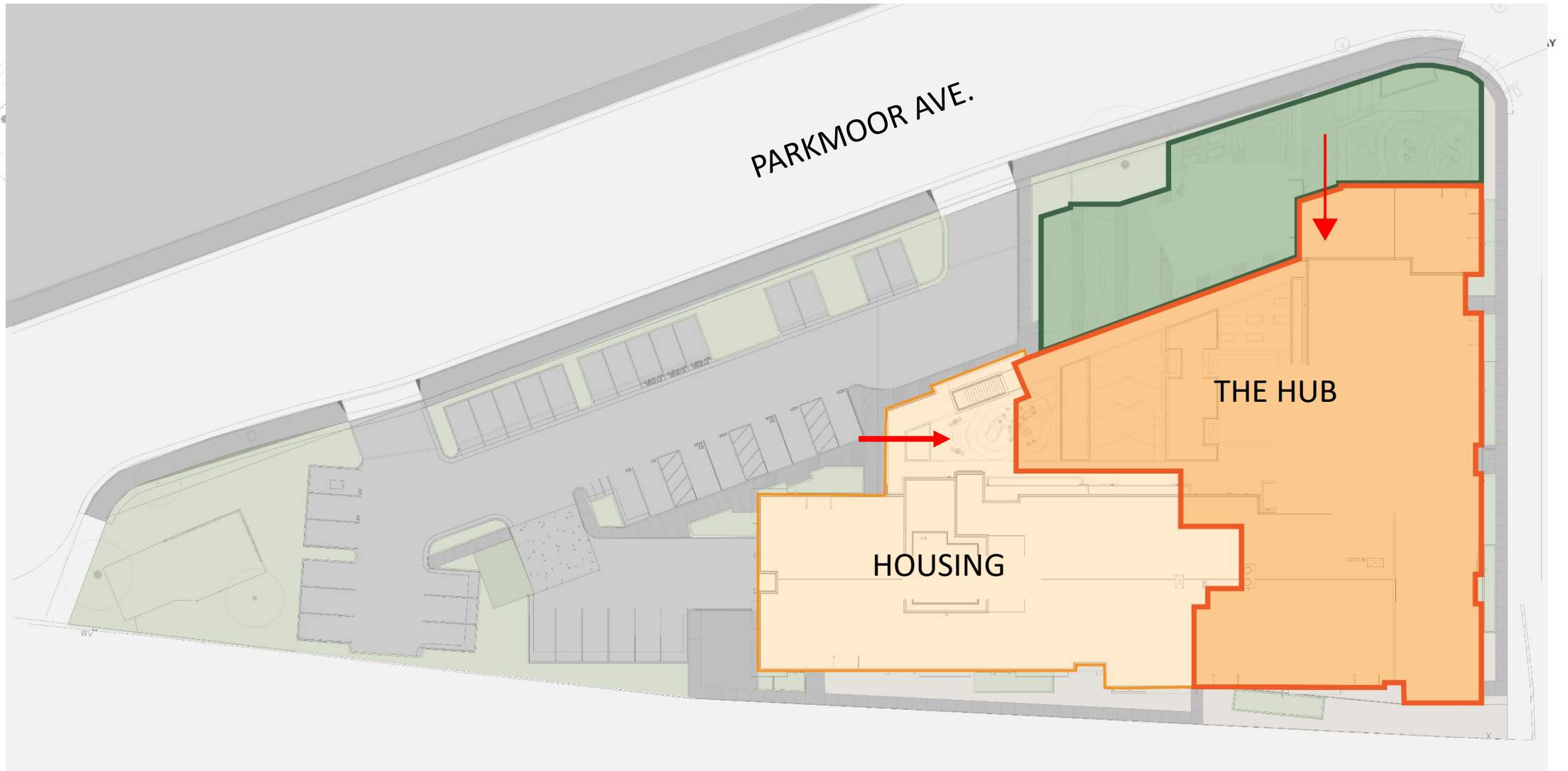


RESPONSE TO ALLIED MEETING W/ SVILC.05.24.22

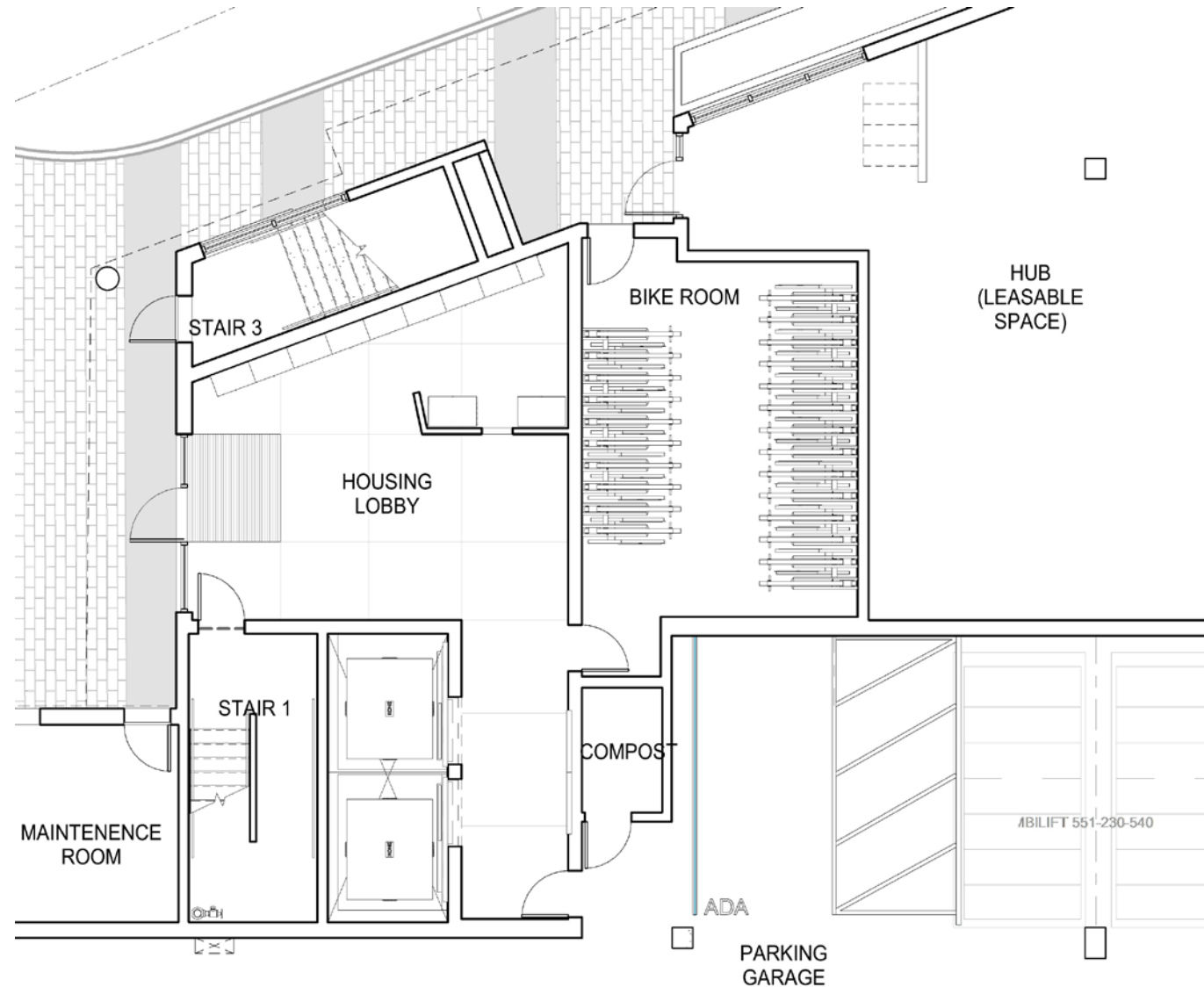
Comment	Response
Panel style lighting and switch	Incorporated into the design
Floor electric outlet should be lower	Our outlets meet code at 18" above floor
Side-by-side refrigerators	Not feasible for this project, but our kitchens have been carefully designed to meet accessibility requirements
Roll-in showers	Added in 2 roll-in showers at studio units on level 2



SITE PLAN



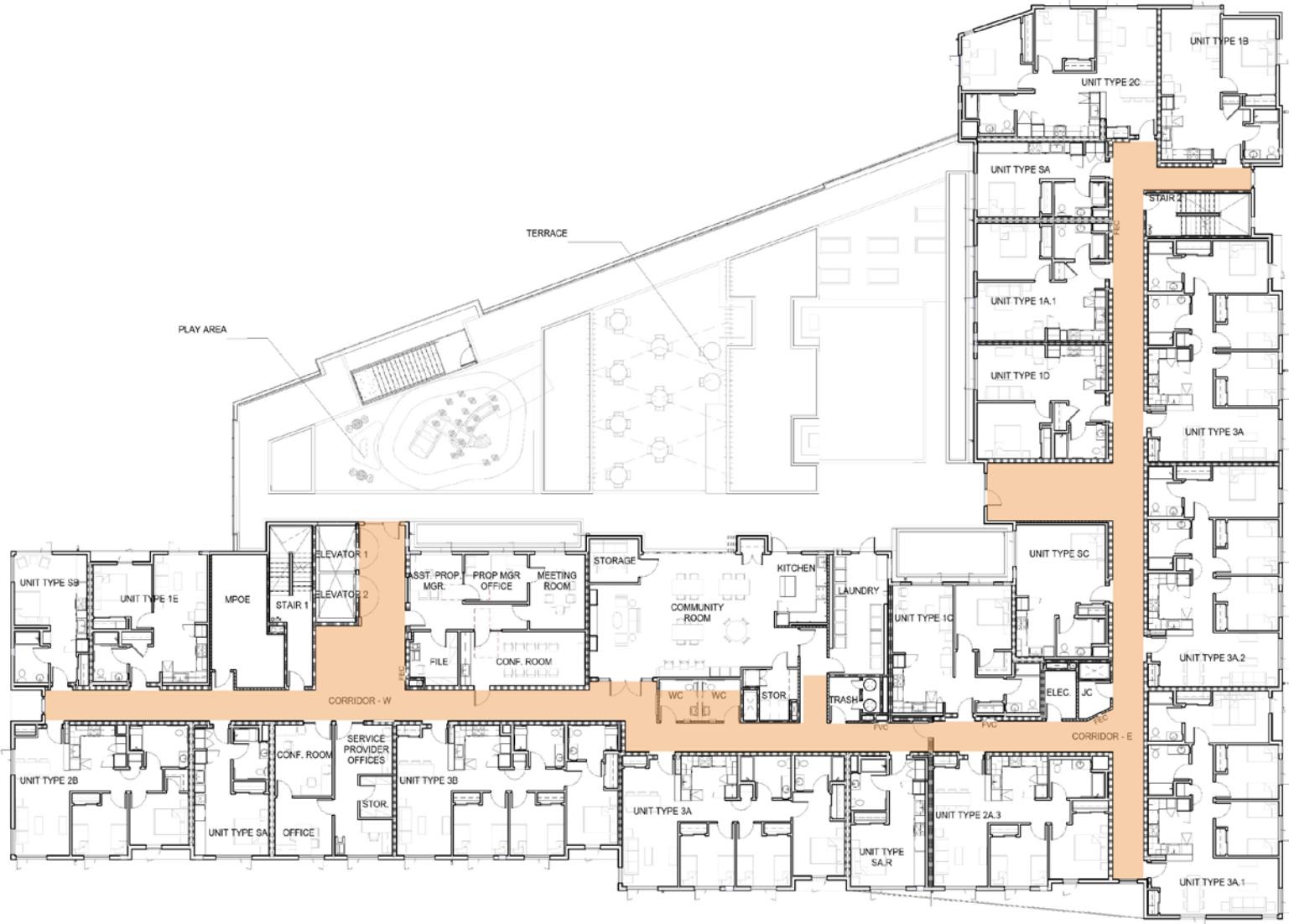
HOUSING LOBBY



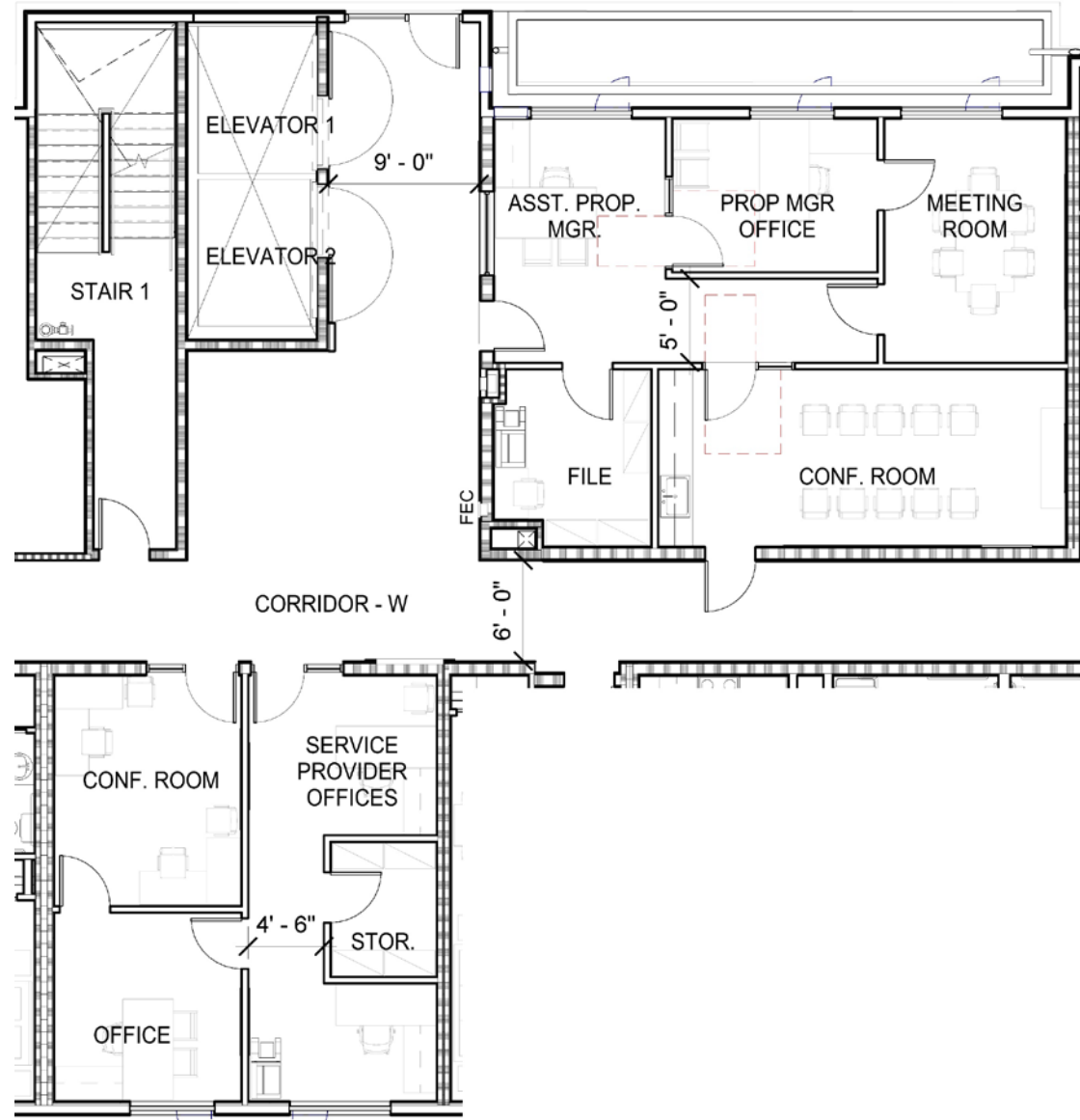
HOUSING LOBBY



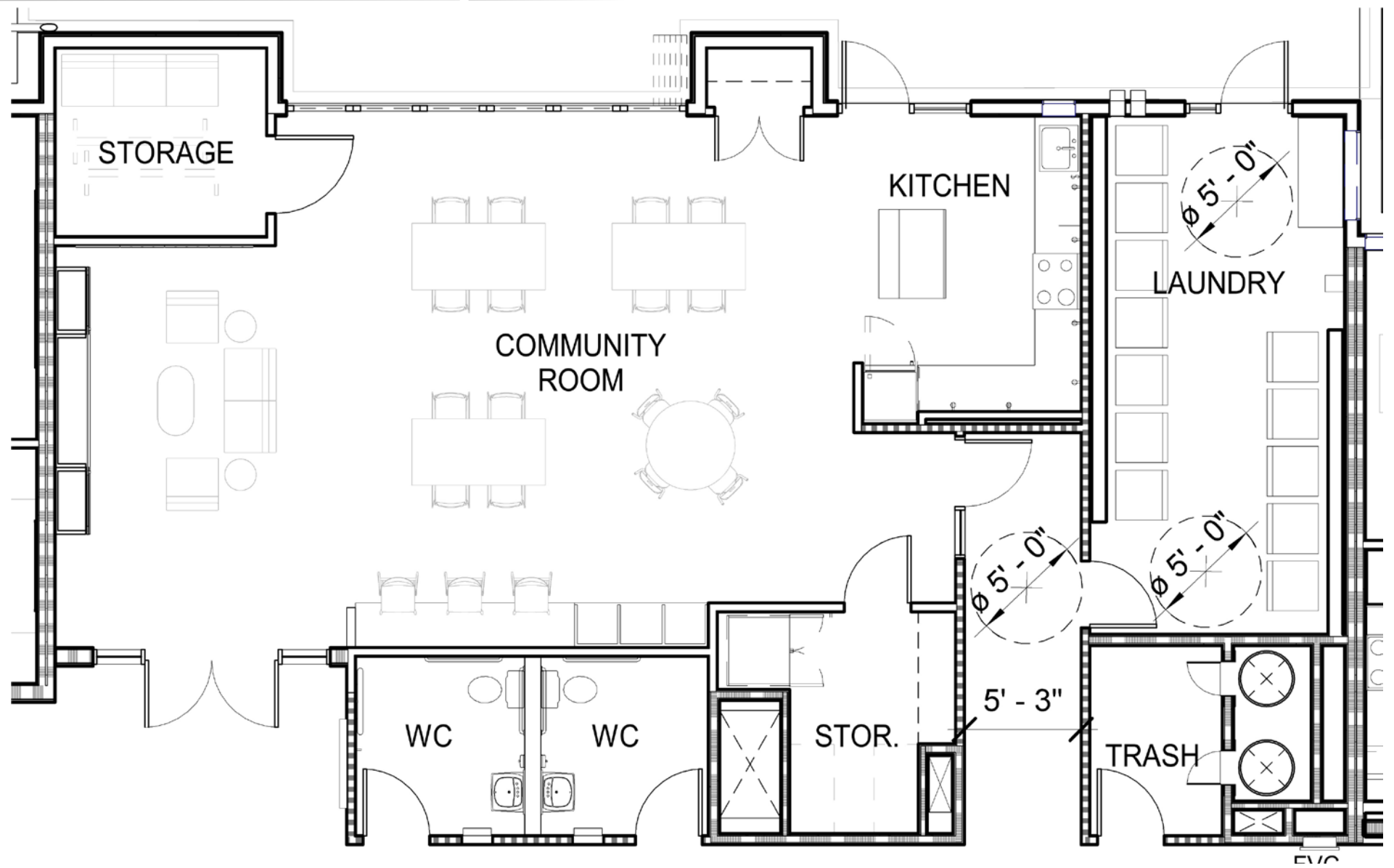
SECOND FLOOR PLAN



ELEVATOR LOBBY & OFFICES



COMMUNITY ROOM & LAUNDRY ROOM



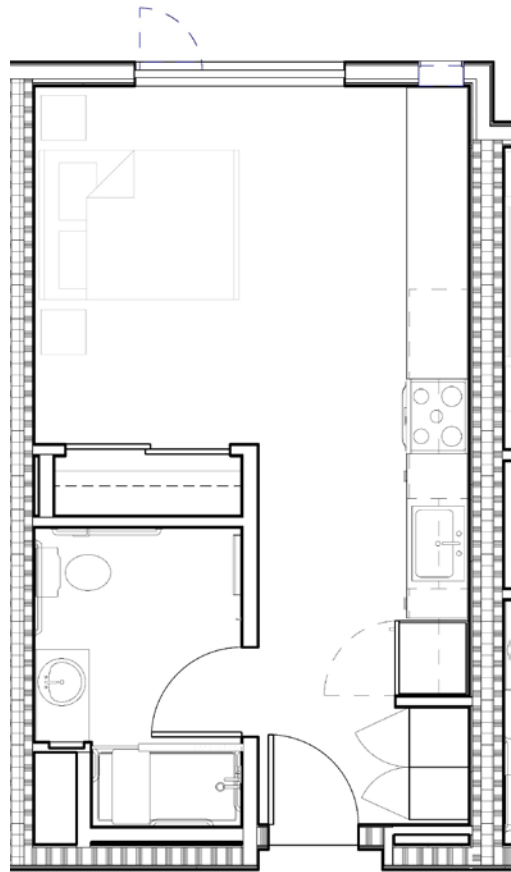
COMMUNITY ROOM



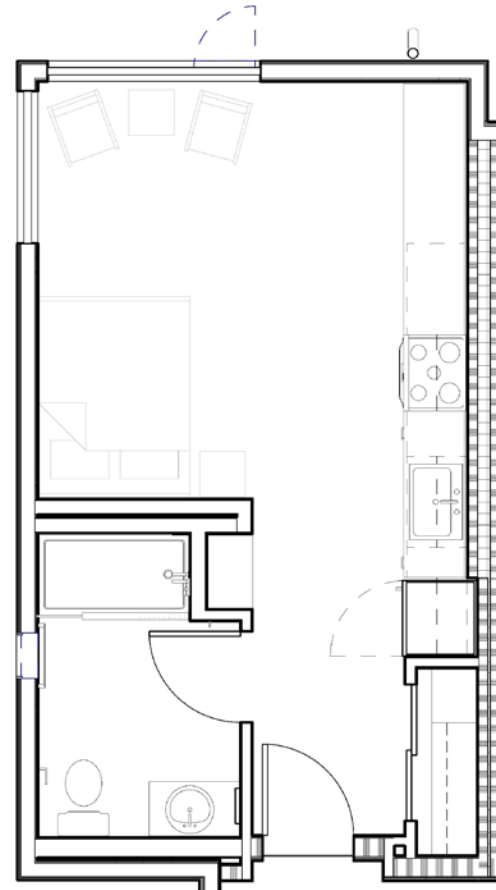
TYPICAL UPPER FLOOR PLAN



UNIT PLANS: STUDIO UNITS

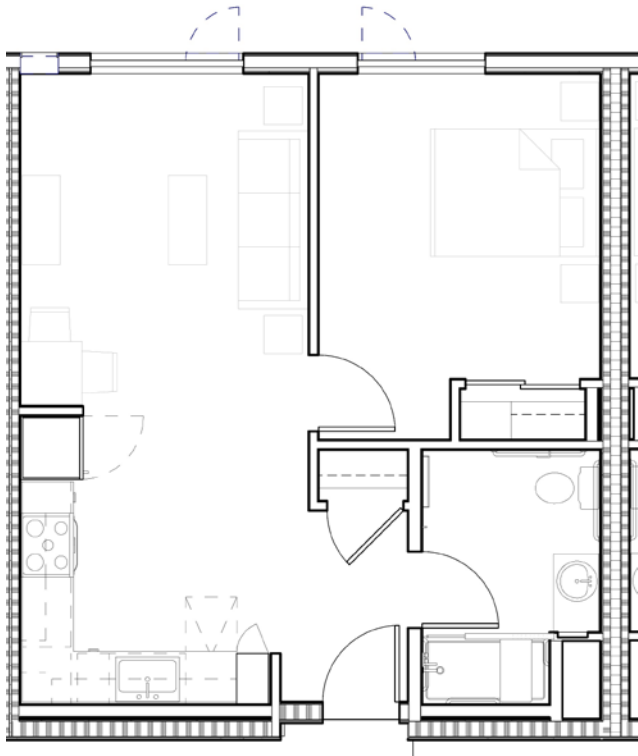


MOBILITY & ADAPTABLE

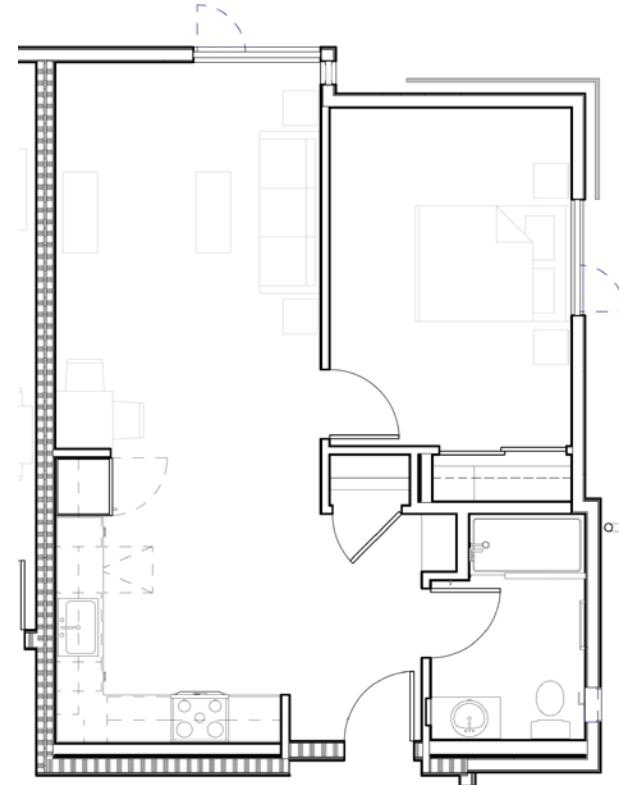


ADAPTABLE

UNIT PLANS: 1 BEDROOM UNITS

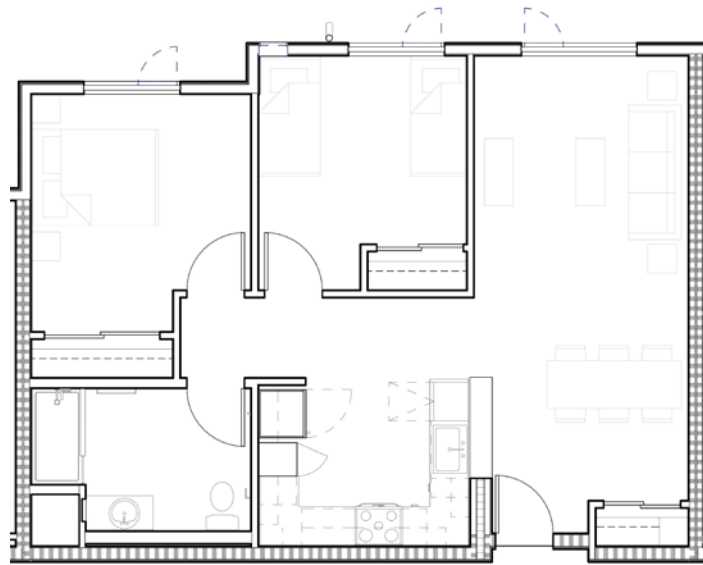


MOBILITY & ADAPTABLE

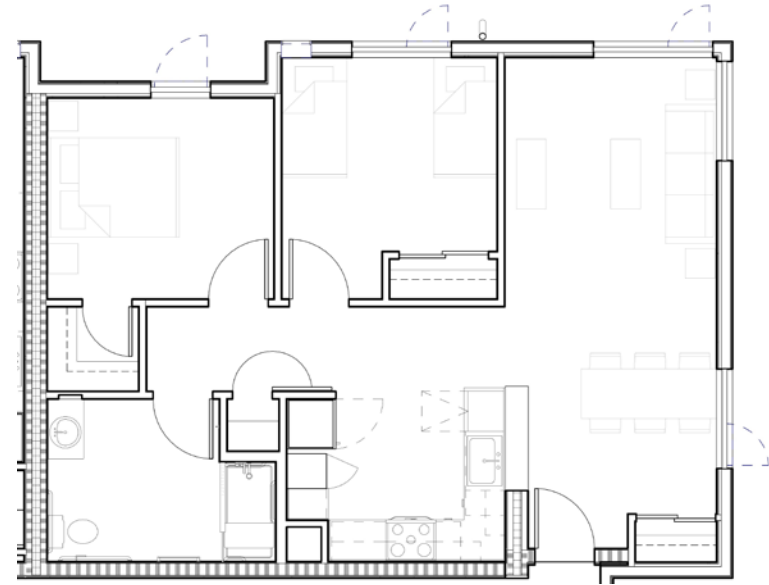


ADAPTABLE

UNIT PLANS: 2 BEDROOM UNITS

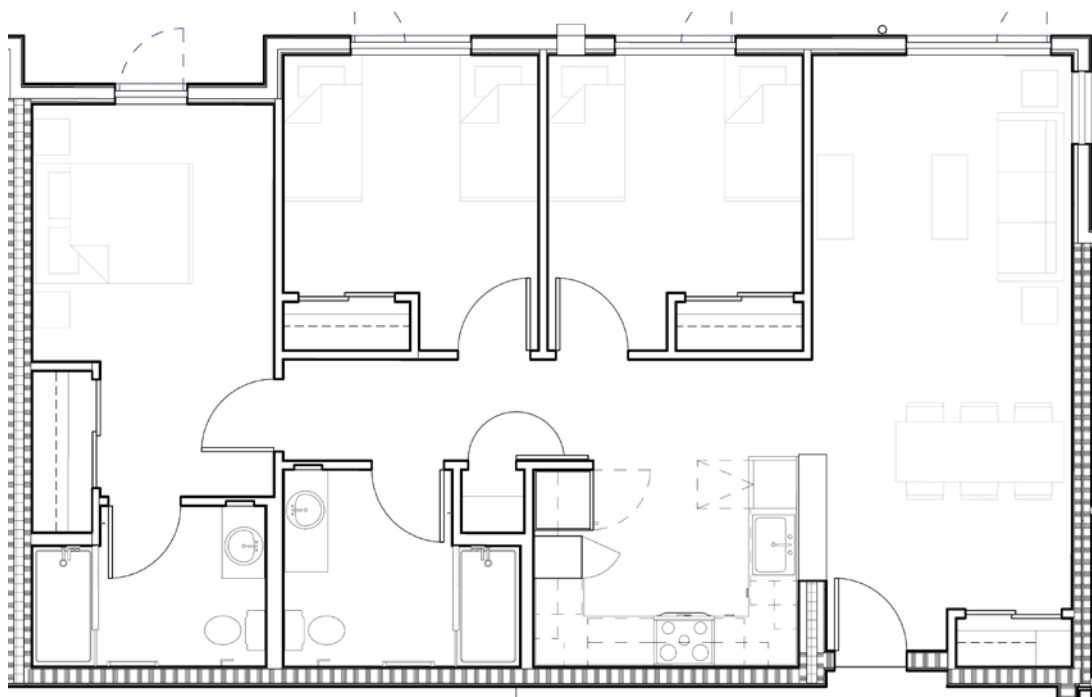


ADAPTABLE

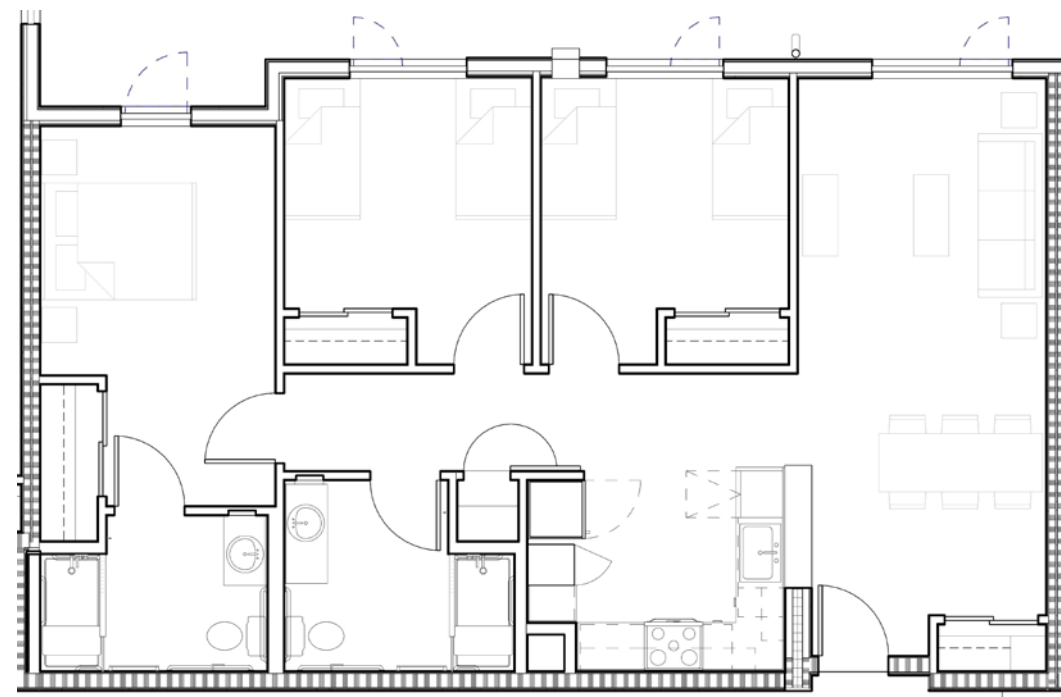


MOBILITY

UNIT PLANS: 3 BEDROOM UNITS



ADAPTABLE



MOBILITY

CONTACT

We appreciate your time and joining us on our meetings!

Project Website: <https://www.abodeservices.org/parkmoor-hub>

On-Going 1:1 Meetings:

Reach out to : Macy Leung, Senior Project Manager at Abode Services/Allied Housing at mleung@abodeservices.org

General Project Email : Parkmoor.Hub@abodeservices.org



County of Santa Clara
Office of Supportive Housing



QUESTIONS AND ANSWERS

Q & A

THANK YOU!

